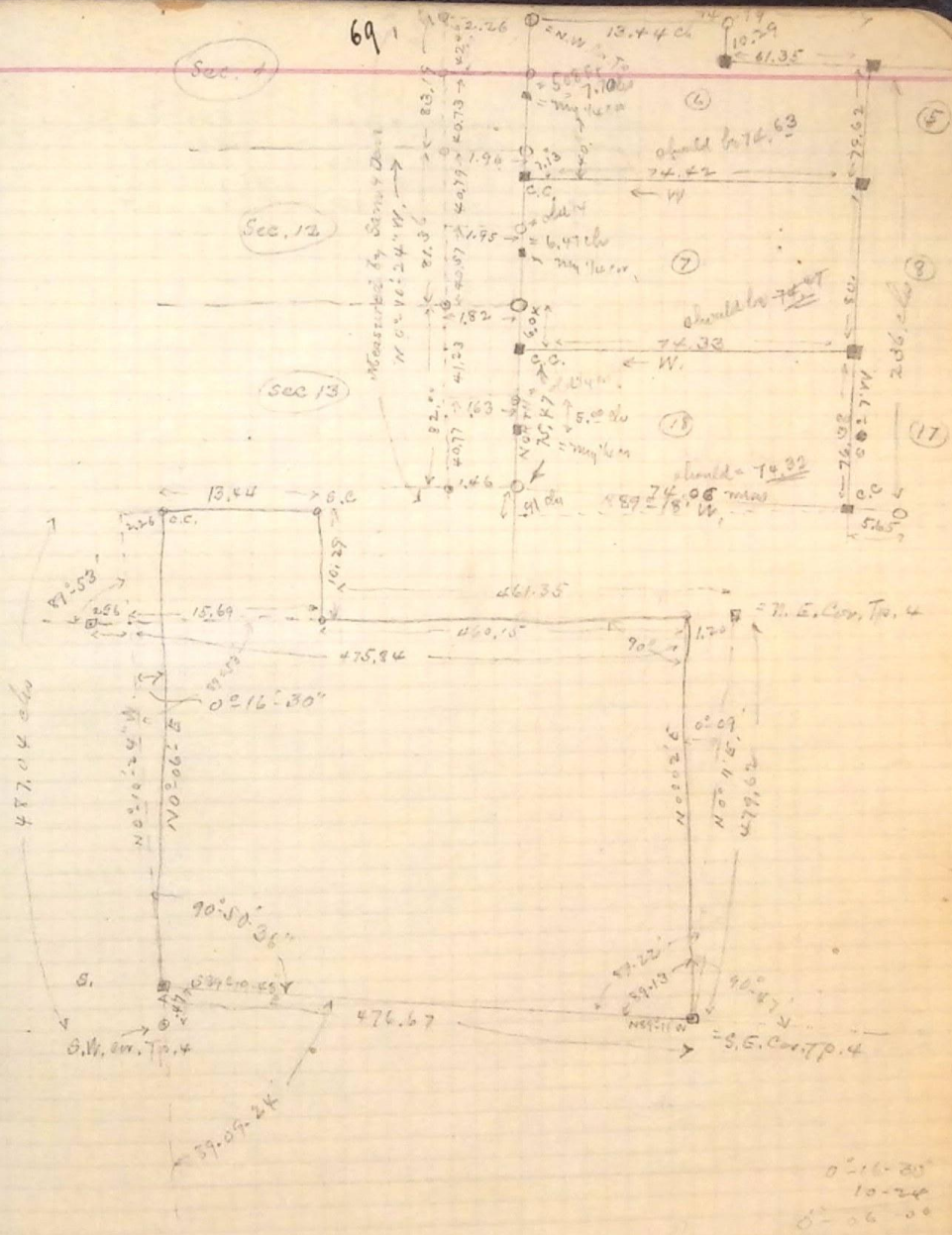


Sec. 4

Sec. 12

Sec. 13

Measured by Survey Done
N 0° 46' 24" W



0°-16'-30"
10-24
6-06-00

226.
377
2262 23 1.280 1.0007
228 32 600 37.56

40.73
82.21
7.10
20.07
279.62
+50
490.11
10.22
482.82

27-53
27-53
90-00
90-50
359-56 total

50.00) .38000 0.00475 = 0°-16'

109.62
6
6.54

487.04
17
111.07
59
537.01